

driade

2008



driade

DRIADE: A REFINED AESTHETICS OF LIVING

If the first forty years of Driade now belong to design history, meaning that we can discuss them inserting personalities and trends within a more extensive collage, the latest pieces are to be observed as signals, as indicators of movement. Openings, revolutions. This is the role that Driade has always assumed for itself: a pioneering trailblazer launching rockets that leave long trails across the sky like comets. Driade's chosen designers are assembled into something that goes beyond a group or a catalogue, perhaps to become an artistic coterie. As always, the designers have been free to express their personal inclinations. Yet the result is not a "linguistic babel", but a lively and varied landscape where, with astute awareness, it is possible to mix deep seas and snow-capped peaks, to combine "outstanding" pieces with others that are intentionally "discreet". Indeed, linguistic rules state that an intense high-pitched noise can only be appreciated if accompanied by low, harmonious sounds. This is the secret of the cocktail that constitutes the Driade collection, distinctly set apart from the monotonous uniformity proposed by many recent novelties in furniture design.

We are certain that, with this ensemble of diverse sounds and very personal poetics, everyone will be able to compose their individual harmony.

In the 2008 Driade collection we listen to the new melodies of Antonia Astori, Rodolfo Dordoni, Fabio Novembre, Borek Sipek, and Philippe Starck

EILEEN, VIRGINIA, FLORENCE and the others represent Antonia Astori's idea of furnishing types that have been slightly forgotten but are indispensable to the articulation of an interior design.

HALL, in Rodolfo Dordoni's interpretation, recalls the warm, welcoming tradition of the upholstered furniture found in English clubs.

DIVINA is the sensational work of Fabio Novembre: a demonstration that sofas can also speak sculptural language.

ACATE, the greater an object's "functionality", the greater its need for poetic quality. Hence Borek Sipek's approach to the design of his new clothes stand.

MONSEIGNEUR is a collection of upholstered furniture designed "in the male form" and dedicated by Starck to a monseigneur, a French man of politics.

MOOR(e) a "shell" that Philippe Starck has placed on a rotating pivot. A shiny, concave exterior shell and a soft, welcoming and convex interior space.

driade s.p.a. Via Padana Inferiore 12 cap. 29012 Fossadello di Caorso (PC) Italy
T. +39 0523 818618 - F. Italy +39 0523 822628 - F. Export +39 0523 822360
e-mail Italy: com.it@driade.com; e-mail Export: export@driade.com, www.driade.com

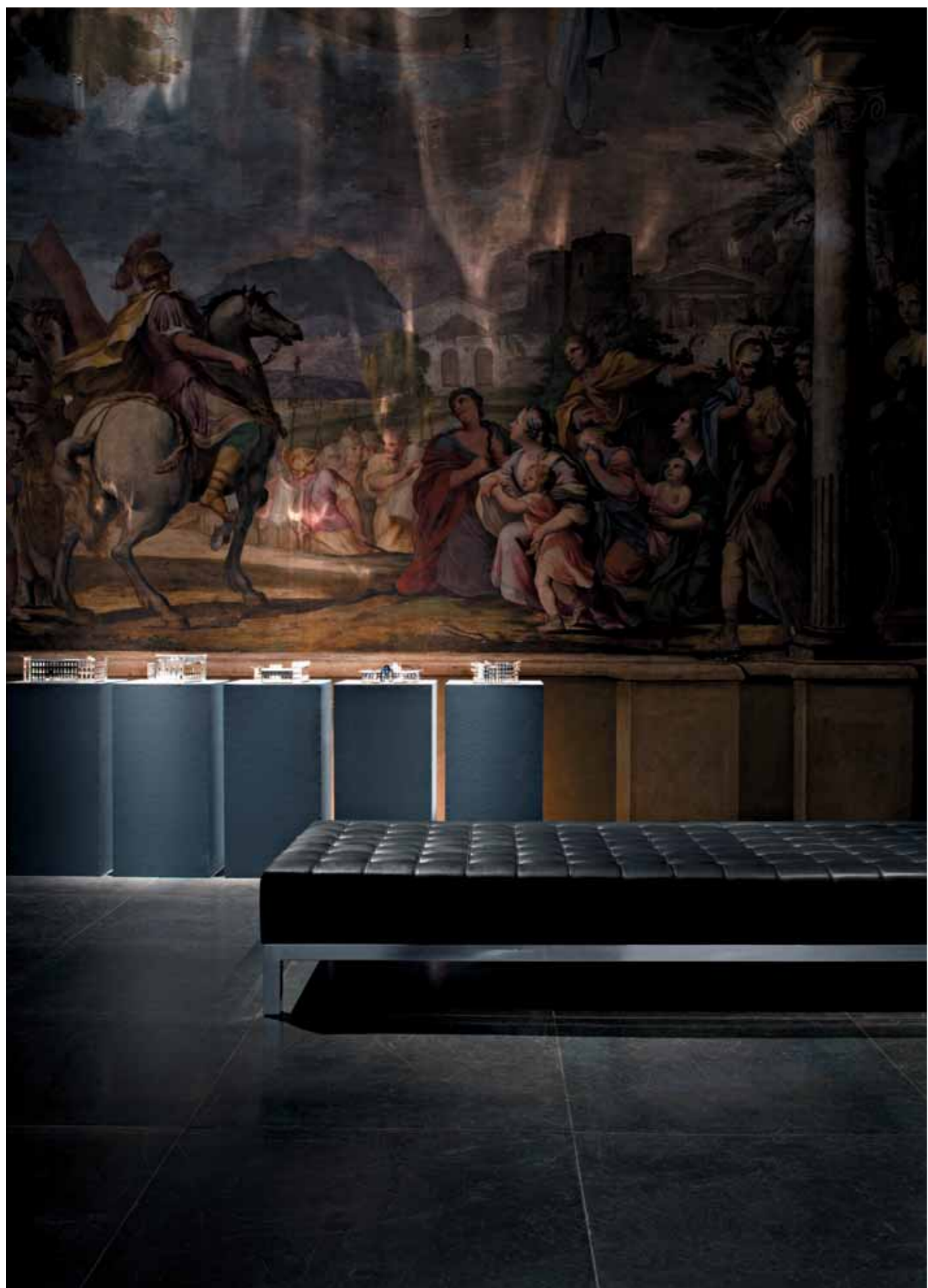


Photos
Santi Caleca

Systems
Repro's

Printed
Arti Grafiche Mario Bazzi
May 2008

The paint at pages 14-15; 17, is drawn from
"I dipinti dell'Orsay" by Robert Rosenblum,
Magnus, 1991. The editors remain available
for eventual assignee.



DIVINA by Fabio Novembre

*Alexandre Cabanel
Naissance de Venus
1863*



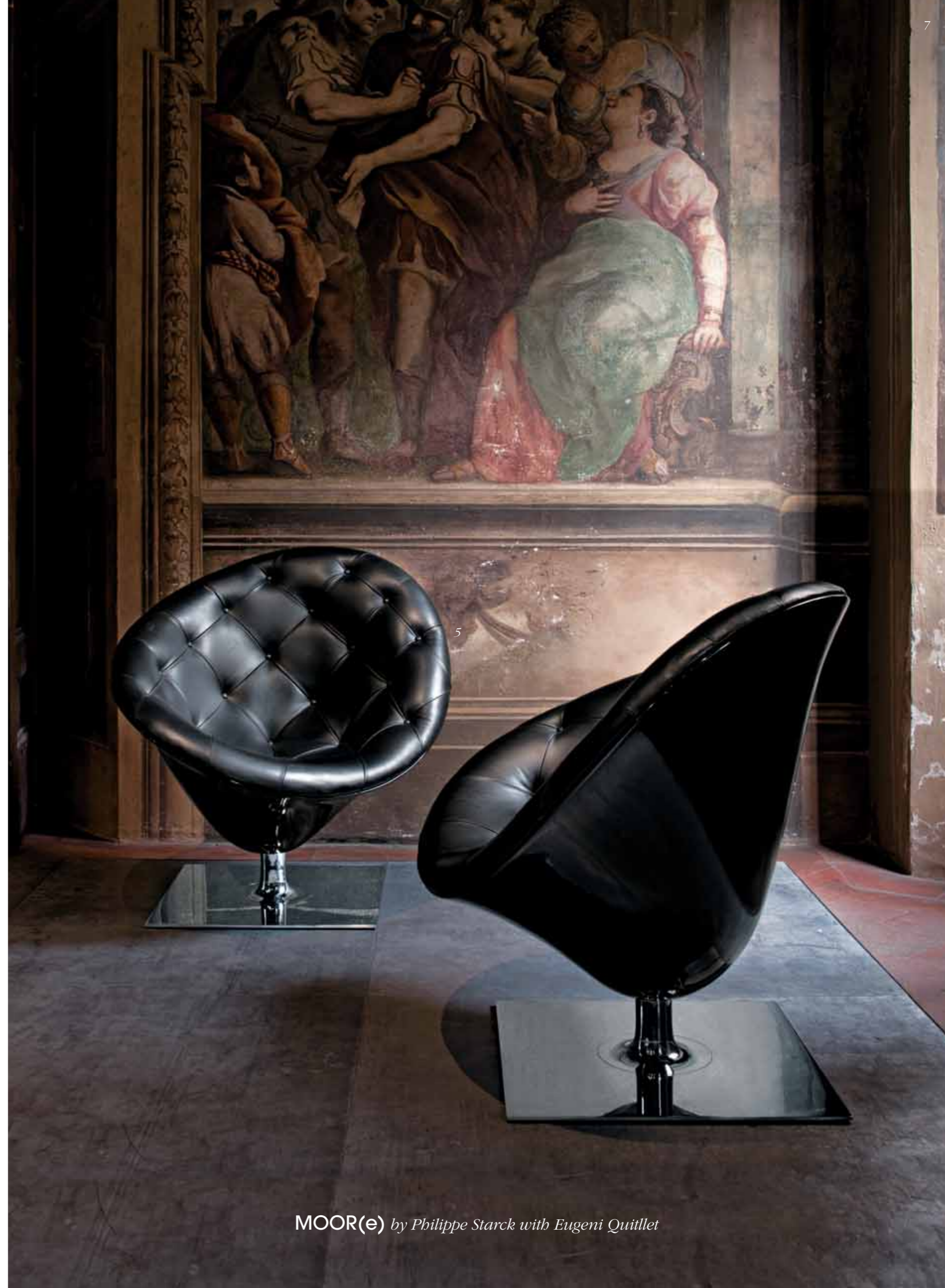
DIVINA by Fabio Novembre



MONSEIGNEUR *by Philippe Starck*



ACATE by Borek Sipek



MOOR(e) by Philippe Starck with Eugeni Quiliet





HALL sofa by Rodolfo Dordoni - EILEEN bookcase by Antonia Astori



HALL dormeuse by Rodolfo Dordoni - EILEEN bookcase by Antonia Astori



VIRGINIA by Antonia Astori



FLORENCE by Antonia Astori

Alexandre Cabanel
Naissance de Venus
1863



DIVINA by Fabio Novembre

DRIADE 2008

**MONSEIGNEUR**

P.12

2008 by Philippe Starck
Easy chair. Structure with front legs/armrests in stainless steel casting and back legs in wood. Seat and back in polyurethane foams with fixed capitonne quilted leather cover. Indoor use only.
W. 53 D. 58 H. 90; seat H. 47; armrests H. 67

**MONSEIGNEUR**

P.4-5

2008 by Philippe Starck
Armchair. Structure with front legs/armrests in stainless steel casting and back legs in wood. Seat and back in polyurethane foams with fixed capitonne quilted leather cover. Indoor use only.
W. 62 D. 67 H. 82; seat H. 41; armrests H. 60

**MONSEIGNEUR**

P.4-5

2008 by Philippe Starck
Sofa. Structure with front legs/armrest in stainless steel casting and back legs in wood. Seat and back in polyurethane foams with fixed capitonne quilted leather cover. Indoor use only.
W. 201 D. 82 H. 82; seat H. 41; armrest H. 61

**MONSEIGNEUR**

P.4-5

2008 by Philippe Starck
Pouf. Structure in stainless steel casting. Upholstery in polyurethane foams with fixed capitonne quilted leather cover. Indoor use only.
It is available a tray in wood and brass with nickel finish.
W. 112 D. 112 H. 41

**MOOR(e)**

P.7

2008 by Philippe Starck with Eugeni Quitllet
Armchair. Base in polished stainless steel casting and swivel chair in fiberglass and capitonne quilted black leather cover. Indoor use only.
W. 99 D. 99 H. 96; seat H. 44,5

**ACATE**

P.6

2008 by Borek Sipek
Clothes stand. Structure in matte brass. Leaves in polished brass. Indoor use only.
W. 48 D. 42 H. 176

**VIRGINIA**

P.12

2006 by Antonia Astori
Writing-table. Structure in wood conglomerate with finish in ebonized teakwood. Indoor use only.
W. 162 D. 60 H. 93; top H. 75

**EILEEN**

P.8-9; 10-11

2006 by Antonia Astori
Bookcase. Structure in wood conglomerate with finish in ebonized teakwood. Indoor use only.
W. 80 D. 29,5 H. 192,5

**COTTON**

2006 by Antonia Astori
Console TV/DVD. Structure in wood conglomerate with finish in ebonized teakwood. Indoor use only.
W. 187,5 D. 60 H. 51

**FLORENCE**

P.13

2008 by Antonia Astori
Cabinet. Structure in wood conglomerate with finish in ebonized teakwood. Indoor use only.
W. 135 D. 47,5 H. 92,2

**FAY**

2008 by Antonia Astori
Cabinet. Structure in wood conglomerate with finish in ebonized teakwood. Indoor use only.
W. 135 D. 47,5 H. 75

**CHESTER**

2008 by Antonia Astori
Chest of drawers. Structure in wood conglomerate with finish in ebonized teakwood. Indoor use only.
W. 135 D. 47,5 H. 39,5

**DIVINA**

P.14-15; 17

2008 by Fabio Novembre
Sofa. Base in stainless steel structure. Padding in polyurethane foams with fixed cover in black printed quilted leather. Woman-shaped back in polyurethane with black elastomer finish.
Limited edition 1/100.
W. 240 D. 105 H. 143; seat H. 43

**DIVINA**

P.14-15; 16

2008 by Fabio Novembre
Island seat. Base in stainless steel. Padding in polyurethane foams with fixed cover in black printed quilted leather.
W. 240 D. 105 H. 43

**DIVINA**

P.14-15

2008 by Fabio Novembre
Pouf. Base in stainless steel. Padding in polyurethane foams with fixed cover in black printed quilted leather.
W. 105 D. 105 H. 43

**HALL**

P.-8-9; 10

1992 by Rodolfo Dordoni
Three-seater sofa. Structure in wood. Padding and pillows in polyurethane foams and batting. Fixed cover in capitonné quilting.
W. 230 D. 84 H. 75; seat H. 43

**HALL**

P.-8-9

2008 by Rodolfo Dordoni
Left (picture)/right side element. Structure in wood. Padding and pillows in polyurethane foams and batting. Fixed cover in capitonné quilting.
W. 139 D. 83 H. 75; seat H. 43

**HALL**

P.-8-9; 11

2008 by Rodolfo Dordoni
Left/right (picture) day-bed. Structure in wood. Padding and pillows in polyurethane foams and batting. Fixed cover in capitonné quilting.
W. 139 D. 77 H. 75; seat H. 43

